

WESTERN  
**ART & Architecture**  
From Cowboy to Contemporary

**Tony Angell: Through Wild Rock**  
**Mark English: Loud, Free and Ever More Beautiful**  
**Sam Terakedis Tells the Animal Truth**  
**Architecture in the West: From Capistrano Beach to Bellevue**



*plus:*

**Wanderings: Marfa, Texas**  
**Michael Haykin in Montana**  
**Artist Workshops: Learning from the Masters**





## CLASSIC WITH A TOUCH OF RUSTIC

Locati Interiors' Amanda Heys creates inviting spaces by blending timeless finishes, comfortable furnishings and modern accessories

WRITTEN BY Eliza Cross PHOTOGRAPHY BY Roger Wade



Designer Amanda Heys, partner of the Bozeman, Montana-based firm Locati Architects and Interiors, has a surprising method for gauging the direction of her clients' design sensibilities. "I usually begin with the plumbing," she says. "Seeing whether the homeowners gravitate to a traditional kitchen faucet or something more edgy and contemporary gives me important information about where their tastes lie."

Getting to know her clients is just one step in the complex process of creating the interior spaces for the sophisticated-yet-comfortable homes the firm has designed across the Rocky Mountain states and in places such as North Carolina and Ontario, Canada.

**This page:** Designer Amanda Heys kept the emphasis on the views in this soaring Yellowstone Club great room, selecting comfortable, traditionally-lined furnishings in a palette of warm reds and golds to complement rustic architectural details. Hancock and Moore chairs are covered in damask chenille, and the forged iron chandelier is custom made. **Opposite, clockwise from top right:** A vintage door leads the way to an intimate wine cellar in this Jobs Peak Ranch home, with stone walls and custom cabinetry lending an Old World aesthetic. The terracotta floor tiles are from Fantasia Showrooms of Bozeman. | Heys had a craftsman build the unique alder bed frame with an attached bench and topped it with a custom russet duvet of Pindler and Pindler "Hampton" quilted fabric. | A curved chest with a mirrored finish provides a sparkling contrast to the horse painting by Carol Spielman.



With the architectural and interior design functions under one roof, Heys says the firm is uniquely positioned to provide a seamless experience for its clients.

“From the moment the foundation goes in, we work side by side with Locati Architects,” she says. “Working as a cohesive team benefits our clients because we can easily communicate, share information and make quick decisions. We all attend the meetings, make site visits and use the same in-house documentation, which keeps us organized and helps the design and building process go smoothly. Those



efficiencies also help us stay on schedule and on budget.”

“We interviewed seven architects before we chose Locati Architects and Interiors,” says Pam Blosser, who worked with the firm for her family’s residences in Thousand Oaks, California, and the Yellowstone Club in Big Sky, Montana. “Amanda and her team added so much flair to our







Photo: Susann Saarel

## WA & A wants to know...

*Locati Interiors' Amanda Heys generously answered our questions and shared some of her favorite style tips and sources.*

**Q:** *What interior design books do you read for inspiration?* **A:** *Mary McDonald Interiors: The Allure of Style* is a wonderful book, and Mary is one of my favorite designers. She is so classic and timeless, and her design creations are always breathtaking. *Jeffrey Alan Marks: The Meaning of Home* is another favorite, especially since I had the pleasure of working on a project with Jeffrey. He has great style and a very creative sense of design. **Q:** *You mentioned lighting as being important. Can you share a couple of your favorite sources?* **A:** We never skimp on lighting, because the right illumination can really make a space. Currey & Company and Fine Art Lamps are two of my favorite vendors for beautiful fixtures. **Q:** *Do you have a favorite furnishing or accessory you use to impart*

*style in a room?* **A:** I often try to sneak in something leopard, even if it's just a pillow. There is no more timeless pattern than leopard print, yet it always looks fresh and modern. **Q:** *Do you have a favorite interior wall paint color?* **A:** Sherwin-Williams Accessible Beige works with earth tones as well as cooler hues like the grays and whites that people are requesting right now. It's a neutral beige that helps keep the space warm. **Q:** *Describe your personal fashion style.* **A:** I tend to dress the way I design — classic and timeless. I wear black all the time, which makes it easy to pick clothes to pack when I'm traveling. I accessorize with great shoes, the perfect bag and good jewelry. **Q:** *Last question — where do you enjoy dining out in Bozeman?* **A:** We have so many wonderful choices here, but some of my favorite spots are the wine bar Plonk, 14 North, Blackbird and Montana Ale Works.



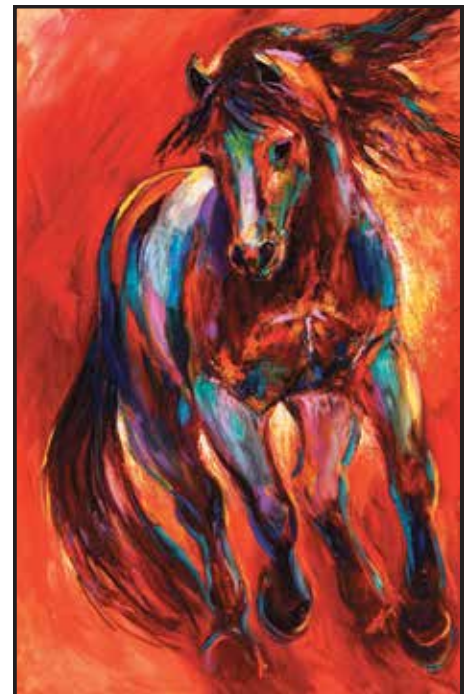


**From left:** The covered deck in this Yellowstone Club home can be enjoyed all year, thanks to a cozy fireplace and space heaters for chilly evenings. Chairs are made of natural peeled logs and covered with cushions with weather-resistant fabrics; the chandelier is by Fire Mountain Forge. | A quartet of pendant lights by Fine Art lamps illuminates the granite-topped work island in this mountain kitchen, where custom red leather-cushioned stools provide casual seating. The wine refrigerator is SubZero.

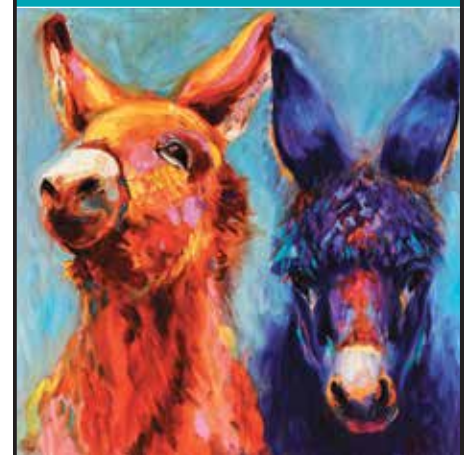
homes. She has a great eye for design, color and furnishings, and she's an excellent communicator who pays attention to the details. I especially love the master bedroom she created in our Montana home; it's a true retreat with a cozy stone fireplace and windows framed by beautiful drapes that look out on a gorgeous view."

Heys grew up on Long Island, moved to Bozeman for high school and went back to New York to earn a college sociology degree. She missed Montana though, and returned to take a job with a small Bozeman interior design firm. "That first job out of college gave me my roots," she says. "I spent two and a half years learning pre-technology techniques — hand-drafting and sketching, calculating things manually and measuring yardage by hand." She was later hired by Jerry Locati as a lead designer for his eponymous firm and spent eight years learning about interior finishes, lighting, plumbing and other architectural details. Two years ago, she became a partner.

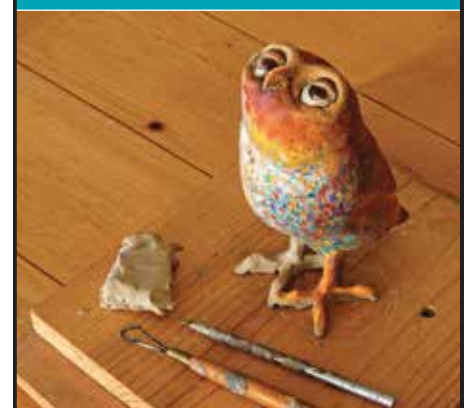
"I often draw on my sociology background to read my clients and get an idea of what they like," she says. "We have the plumbing discussion to get the dialogue going, and we look at photos, online projects and books. Locati Architects and Interiors is known for homes that combine traditional and rustic elements and spaces that are elegant, yet warm and inviting. At the same time, we have



*Power Surge*



*Mug Shots*



*pre-cast clay of limited edition bronze  
"Stargazer"*



236 Delgado St  
Santa Fe, NM  
505.992.0400  
www.MeikleFineArt.com  
Info@MeikleFineArt.com

some clients who are moving toward more of a transitional or mountain-contemporary look, and we can help them achieve that.”

Heys prefers traditional choices for the interior materials, such as tile and stone for counters, floors and wall textures. “We practice restraint on those surfaces, because we want the finishes to look good for years to come,” she says. “I’m also a big believer in top-quality lighting, and we often design custom fixtures for just the right look and fit. To incorporate modern, trendy elements we use fabrics and soft goods that can be more easily replaced for a fresh look.”

The firm’s office — designed by principal Jerry Locati — is on Main Street in Bozeman’s historic downtown, with the architectural staff on the second floor and Locati Interiors’ team of seven on the first floor. Heys says she appreciates the town’s laid-back lifestyle. “I enjoy walking along Main Street, taking my son to the park, and meeting family and

friends downtown for a nice dinner. I also love living in this area, where we can so easily go hiking and skiing.”

Heys feels especially fortunate to be able to do what she loves. “I enjoy listening to our clients and creating spaces that work for their lifestyles,” she says. “Since we can create anything they like, the sky really is the

limit. It’s fun to mix the different elements they like in a home to truly make it theirs.”

It all begins, of course, with choosing just the right kitchen faucet. ■

**Eliza Cross** ([www.elizacross.com](http://www.elizacross.com)) is a contributing editor to *Western Art & Architecture* and the author of seven books, including the award-winning *Family Home of the New West* (Cooper Square Publishing). A member of the Authors Guild and Colorado Authors League, she has written more than 250 articles for a variety of national and regional publications.

Getting to **know** her clients is just one step in the complex process of **creating the interior spaces** for the **sophisticated**-yet-comfortable homes the firm has designed across the Rocky Mountain states and in **places** such as North Carolina and Ontario, Canada.

## INVEST & ENJOY



ELK RIDGE RANCH  
Fishtail, MT • \$9,900,000



JORDAN RUBY RIVER RANCH  
Sheridan, MT • \$12,000,000



Brokering the Finest Farms,  
Ranches & Sporting Properties

[FayRanches.com/waa](http://FayRanches.com/waa) | 1-800-238-8616

