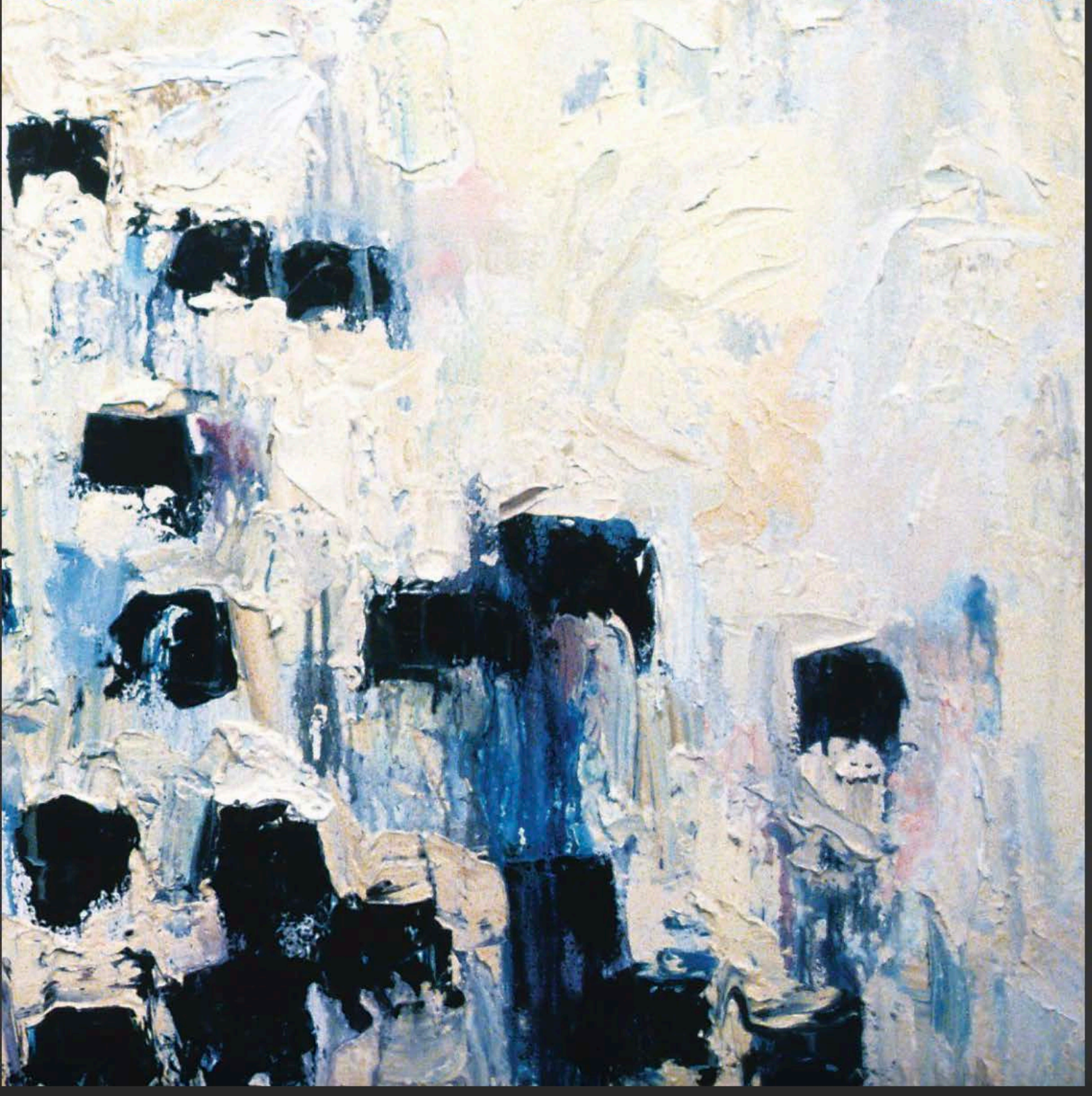


# LUXURY

LUXURY MAGAZINE

WINTER 2018



# CHALET CHIC

NO QUIANT TYROLEAN FANTASIES OF KNOTTY PINE AND RUFFLED CURTAINS HERE. THESE MODERN TAKES ON THE CHALET TYPOLOGY ARE HANDSOME AND SOPHISTICATED—EACH A CONTEMPORARY BASE CAMP FOR SNOWY VISTAS AND INVIGORATING WINTER SPORTS.

by Jorge S. Arango

Clawson Photography



A six-bedroom home in Big Sky, Montana

**PRIVE**  
PRIVELBC.COM



## Conversation Pieces

Natural Fancy Color Diamonds are the ultimate statement gems...rare yellows, pinks, blues, and greens. Once you own one, there is no turning back.

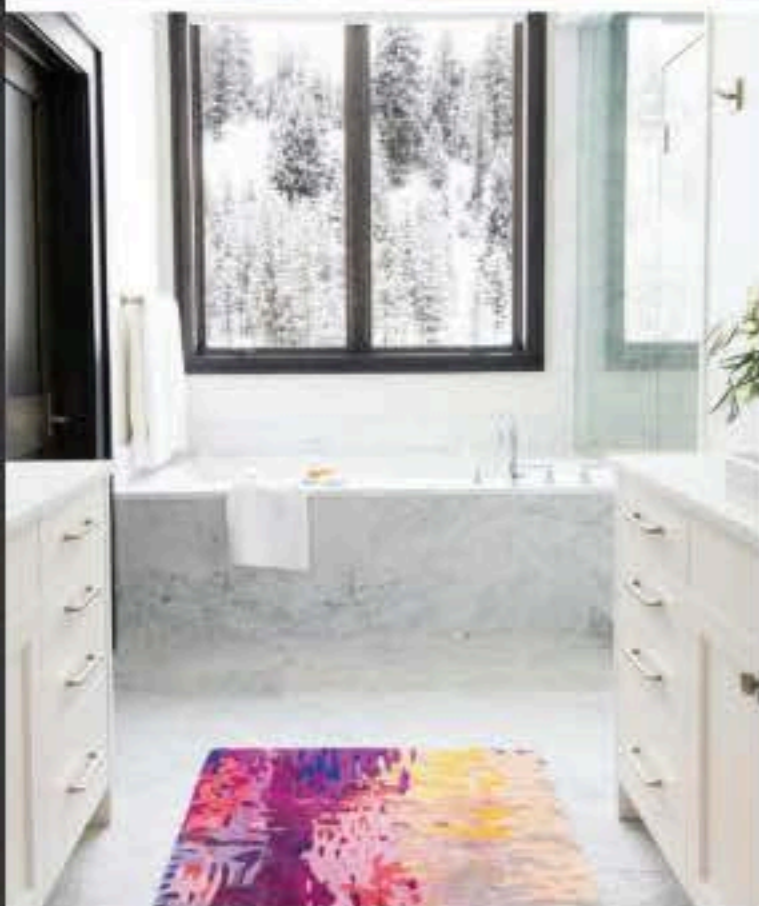
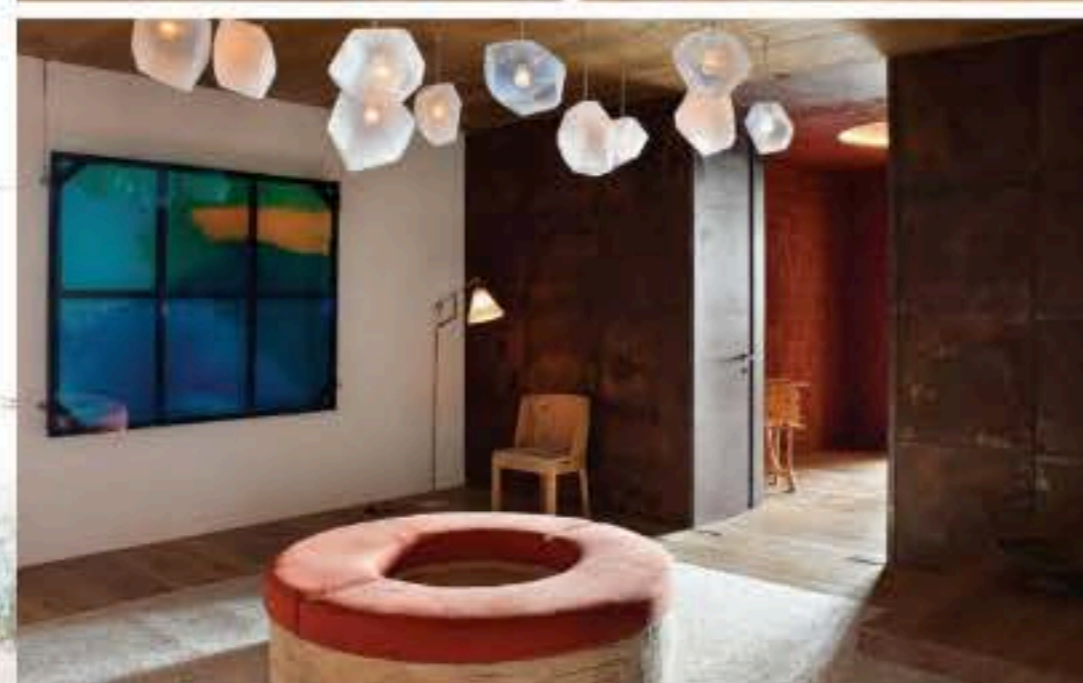
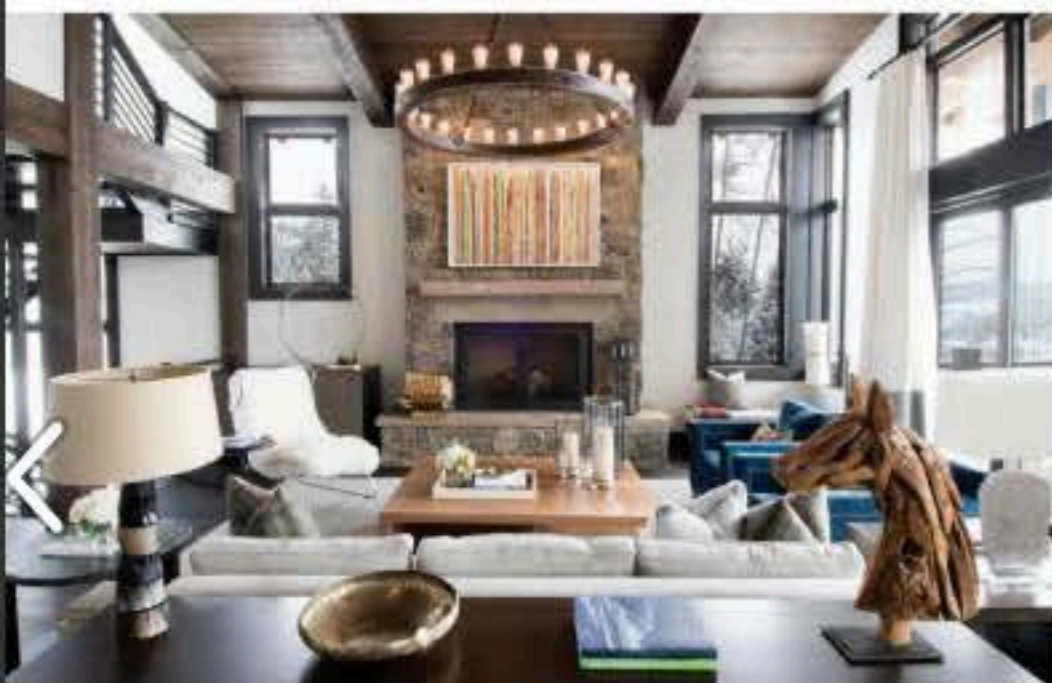
© PADULO PRIVÉ 2018 PHOTOGRAPHY DAVID BENOÏEL ART DIRECTOR TONY FERRARA



**1. YELLOWSTONE CLUB, BIG SKY, MONTANA**  
**Architecture & Interiors:** Locati Architects, [locatiarchitects.com](http://locatiarchitects.com)  
**Square Feet:** 8,400 **Bedrooms:** 6  
**Baths:** 6 **Nearest Skiing:** On the Pioneer Mountain ski run **Average Yearly Snowfall:** 300 inches



When it comes to expansive vistas, being up close and personal necessitates certain things. In the case of this ski-in/ski-out Yellowstone Club home right on the private ski resort community's Pioneer Mountain run, architect Corey Kelly says, *"We wanted to make sure ceilings were tall enough and windows wide enough to capture the view."* That meant a 16-foot-high ceiling and an even wider window wall in the main living space. Grand proportions also jibed with the way the family uses the home. "When they come, they come not with three or four, but with family and friends," explains Kelly. "It's laid out for a lot of people hanging out." The wife's modernist predilections resulted in a clean, minimal palette of board-formed concrete, glass, and steel. "We didn't want a lot of heavy wood beam work," Kelly notes. "Where we needed them, we used steel I-beams. Reclaimed wood was primarily used on the siding." >



## 2. YELLOWSTONE CLUB, BIG SKY, MONTANA

**Architecture:** Brechbuhler Architects, [brechbuhlerarchitects.com](http://brechbuhlerarchitects.com)  
**Interiors:** Discovery Design, [discoverydesign.com](http://discoverydesign.com); Discovery Land Company, [discoverylandco.com](http://discoverylandco.com) **Square Feet:** 4,500 **Bedrooms:** 4 **Baths:** 7  
**Nearest Skiing:** Yellowstone Club's ski trails, available only to members  
**Average Yearly Snowfall:** 300 inches

Almost 10 years ago, the Discovery Land Company (in an investment partnership) brought the Yellowstone Club from the brink of bankruptcy and revived its reputation as one of the premier private ski resort communities in the country. Today development is booming. For this three-level home, says Design Director Natalie Ellis of Discovery Design, "We used elements from the traditional rustic chalet and created a more modern home, with clean-lined beams, large picture windows, and an open steel staircase." The primarily monochromatic palette is texturally rich in velvet, mohair, cashmere, leather, sheepskin, animal hides, and mixed metals. *"We used the palette from the art, accessories, and upholstery to pull in the blues, lavenders, and fuchsias from the beautiful mountain sunrises and sunsets."* Though the owners wanted clean lines and tailored forms, Ellis achieved maximum comfort, she says, by "filling the upholstery and pillows with down and feathers, creating comfortable places to lounge throughout."

## 3. ANDERMATT, SWITZERLAND

**Architecture:** Denniston International Architects, [denniston.com](http://denniston.com) **Interiors:** Pierre Yovanovitch, [pierre-yovanovitch.com](http://pierre-yovanovitch.com) **Square Feet:** 5,400 **Bedrooms:** 4 **Baths:** 4  
**Nearest Skiing:** Andermatt-Sedrun, adjacent; Nätschen and Gemsstock, both within a half mile **Average Yearly Snowfall:** 250 inches

*"I want people to know they are in the Swiss Alps as soon as they walk in,"* says Parisian designer Pierre Yovanovitch of this bare, hangar-like penthouse. "To avoid straightforward pastiche, I chose materials strongly associated with chalets [clapboard, reclaimed wood] that I mixed with more contemporary materials [patinated steel, ceramics]." Yovanovitch referenced the home's quaint surroundings in a spruce staircase railing fashioned like rural fences. Floor-to-ceiling windows along the entire back wall of the great room showcase snowy mountains. Low-back couches and upholstered arm chairs furnish the space without blocking views. Tucked into two corners of the room, wooden alcoves shaped like playhouses define the formal dining room and an intimate seating area. "The alcoves allow the great room concept natural to chalets while satisfying my need for some kind of order," Yovanovitch says. ▸



# PRIVATE PEAKS



ONE OF THE HOTTEST MARKETS—PRIVATE-ACCESS SKIING—IS ATTRACTING BUYERS SEEKING PRESTIGE, PRIVACY, AND AN ASSET THAT IS ENJOYED WHILE INCREASING IN VALUE.

by Irene Rawlings

Ski-country real estate has been trending upward since 2012 but has seen a sizable surge in the past two years, according to mountain-based real estate brokers. Properties are selling quickly, with many in pre-sale while they are still under construction, like the 48 nearly sold-out two- to six-bedroom condos (from \$4 million) at the newly expanded lodge at the members-only Yellowstone Club. The club attributes this, in part, to the reliability of snow in recent years. It is not only the quantity of the snow but the quality—acres and acres of untracked powder—that lures well-heeled skiers to the private-mountain experience. There's great appeal in skiing all day without crossing the tracks of another person. "We are unique," says Marty Setina of Telluride Properties, the real estate broker representing Cimarron Mountain Club, "and there are just not a lot of us."

## PERSONAL POWDER

Every skier dreams of a mountain with no lift lines, where you can score fresh tracks and ski in endless knee-deep powder. Two ultra-private ski resorts provide that experience—each in a very different way.

### Cimarron Mountain Club Colorado

Larger than Aspen Mountain, this oasis is the breitbart of avid skier and retired natural resources economist Jim Aronstein. Aronstein wanted skiing to involve a greater connection with nature and wilder moss. So, in 2004, he bought his own mountain. In the remote San Juan (between Telluride and

Crested Butte), the 1,750-acre property tops out at 11,450 feet with an appealing mix of terrain from open runs above the tree line to steep couloirs bordered by 900-foot-tall cliffs to trails following natural gullies. Deep powder is never skied off by noon, and instead of chairlifts Cimarron operates snowcats with heated leather seats and about 12 minutes between runs.

When Aronstein decided to share his find, he opened the place to just 13 other families, and 6 memberships are left. The intention is to keep it small and undeveloped so the number will never increase. One of the superpluses for a living member is the

helicopter pickup at the Monrose airport; the heli lands atop the ridge so passengers ski down to the glam yurts that make up the lodge. In summer, there's lake fishing on



Top: Bryan Turner; Darryl DeLuca

property or stream fishing on the Cimarron River.  
**INITIAL MEMBERSHIP FEES:** None, but property ownership is required.  
**ANNUAL DUES:** Between \$55,000–\$65,000  
**REAL ESTATE OPTIONS:** Every member pays \$2.825 million and is offered a 35-acre site on which to build. [cimarronmountainclub.com](http://cimarronmountainclub.com)

### Yellowstone Club, Montana

The expansive terrain here caters to all levels and abilities—across 2,700 skiable acres find 18 lifts and more than 100 runs, including groomed trails, powder glades, and chutes off the ridge. The club now has approximately 700 members and will be fully sold out at around 900 member families. Over half of the real estate has direct access. Residences vary from slope-side or lakeside condos to homesites (in or above the trees), legacy ranches (160–360 acres), and architect-designed residences.  
**INITIAL MEMBERSHIP FEES:** \$400,000, plus property purchase.  
**ANNUAL DUES:** \$42,500  
**REAL ESTATE OPTIONS:** Condos, from \$3.5 million; homesites from \$3 million; existing residences, from \$6.95 million; ranches, from \$18 million. [yellowstoneclub.com](http://yellowstoneclub.com)

## PRIVILEGED SKIING

These real estate opportunities deliver the private mountain feel—intoxicating vistas, perfect first tracks, acres of glide skiing, upscale amenities—without the obligation of owning the actual ski area.



### Martis Camp

Truckee, California

Taking advantage of its border with Northstar, Martis Camp has added a private-access ski lift from inside its gates to the ski resort's public mountaintop. The 2,377-acre private gated community features pine forests, wide meadows, and meandering creeks, as well as amenities that range

from a Lake Tahoe beach shack to a Tom Fazio-designed golf course. The Lost Library—a cabin with a fireplace and wrap-around porch—is a welcome stop on a 20-mile community trail system great for biking in summer and taking our skiny skis in winter. Social membership is available for a \$10,000 trans fee with the purchase of a property, which is

subject to approval by the board. All memberships can be passed on to future generations, and golf memberships are an additional \$130,000 (limited to 375 members). Home sites range from \$995,000 to \$3.5 million. For a custom home, purchase a four-bedroom, four-bath cabin for \$3.695 million and an executive home for \$3.995 million. [martiscamp.com](http://martiscamp.com)

### Promontory Club, Utah

This 10-square-mile neighborhood includes rustic and mountain-modern cabins, mountain lodges, and buildings with great views. A new movie studio in Park City and the Sundance Festival are a big draw for actors and celebrities, who have bought vacation homes here. The club's PC Lodge opens in December at the base of Park City Mountain Resort adjacent to the First Time Lift. The ski-in/ski-out, members-only lodge features a Club Concierge and Ski Valet who will shuffle your skis, boots, and poles so all you have to do is click in the morning and clip out at the day's end. To be a member, you must be a property owner. Home sites from \$450,000; ready-built mountain-modern homes from \$1.4 million; custom homes from \$2.5 million–\$18 million. [promontoryclub.com](http://promontoryclub.com)

## IN OTHER NEWS: WARMER CLIMES

### The Residences at Mandarin Oriental Honolulu, Hawaii

In Honolulu's trendy Ala Moana District and close to famed Waikiki Beach, find these 99 open-floor-plan residences atop the Mandarin Oriental hotel that go up from the 19th floor with sophisticated Dianna Wong-designed interiors. Spa-like master baths; lanai-like balconies; residents-only pool and cabanas. Estimated from \$3.5 million. [mandarinoriental.com](http://mandarinoriental.com)

### The Vintage Club Indian Wells, California

Centered on two Tom Fazio-designed golf courses with a wide selection of homes and homesites showcasing lake, mountain, and golf-course views. Eleven refined tennis courts (nine hard-surface and two Har-Tur clay courts). Spa and wellness center with certified personal trainers. From \$500,000–\$25 million. [thevintageclub.com](http://thevintageclub.com)

### One Thousand Museum, Miami

This sculptural, 62-floor Zaha Hadid Architects-designed residential tower has swanky four- to six-bedroom residences with large terraces, indoor and outdoor pools. Unusual features include a helipad and bank-quality vault. From \$5.8 million (half floor)–\$19.6 million (full floor). [1000museum.com](http://1000museum.com)

The Fairways at Whitetail Club, Idaho  
Three- to five-bedroom townhomes alongside the Whitetail Club, a golf course designed by Roger Packard and Andy North. Owners have



access to a full Whitetail Club membership, including luxury concierge services and best-in-class amenities, a lakefront clubhouse on Payette Lake, a 14,000-square-foot indoor tennis and fitness center, a Fish & Swim Club, and access to neighboring Shore Lodge's amenities and services. From \$1.235 million–\$1.82 million. [whitetailclub.com](http://whitetailclub.com)

### 130 William, New York

Designed inside and out by Sir David Adjaye, this 66-story downtown Manhattan tower has a distinctive black facade punctuated by huge arched windows. Inside are loft-like ceilings, Gaggenau appliances, and marble bathrooms. Unusual amenities: golf simulator and private IMAX theater. Studios from \$795,990; four-bedrooms from \$6.35 million. [130william.com](http://130william.com)

### The XI, Chelsea, New York

These travertine-clad towers in Manhattan's celebrated West Chelsea, near the Whitney Museum and the High Line, have big views of the Hudson River and New York City skyscrapers. A five-star Six Senses Hotel provides residence-only amenities. From \$2.85 million–\$28 million. [thexi.com](http://thexi.com)

### 1 Hotel & Homes, Cabo, Mexico

A handful of residences are still available. Classic one- to seven-bedroom Mexican hacienda-style homes and villas. Residents will enjoy exclusive privileges at 1 Hotel Cabo—a private beach, access to four swimming pools, in-residence dining, and private chef services. From \$1.2 million–\$7 million. [1hotescabo.com](http://1hotescabo.com)